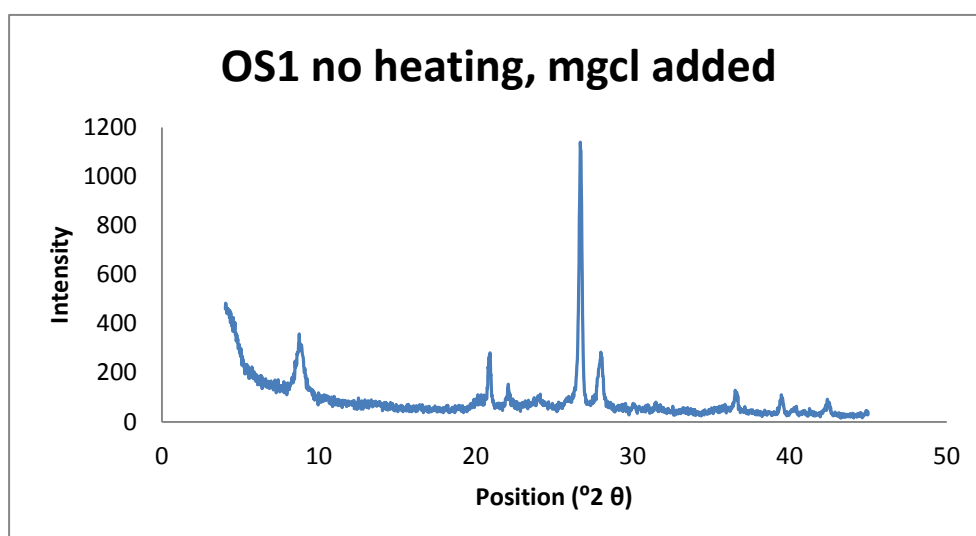
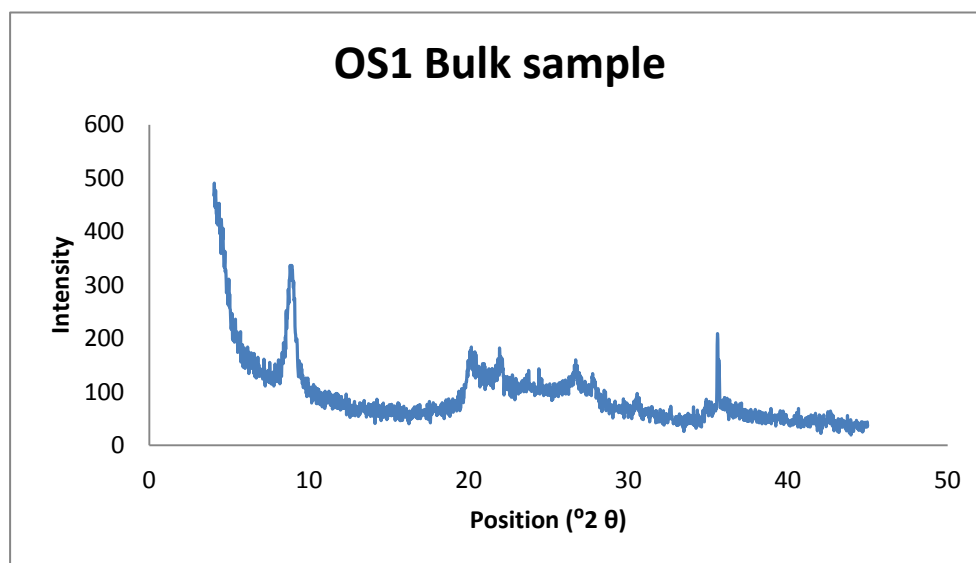


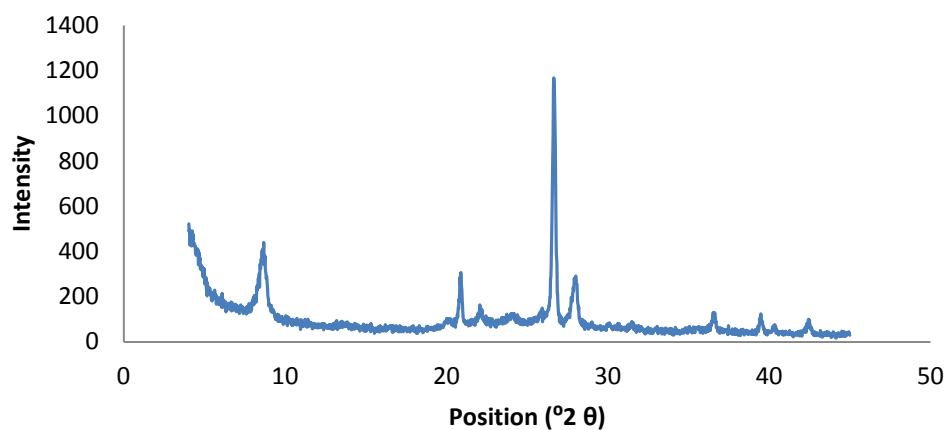
Appendix 6.1

Appendix 6.1 presents all of the X-ray diffractograms for both sensitive and non-sensitive material from this study.

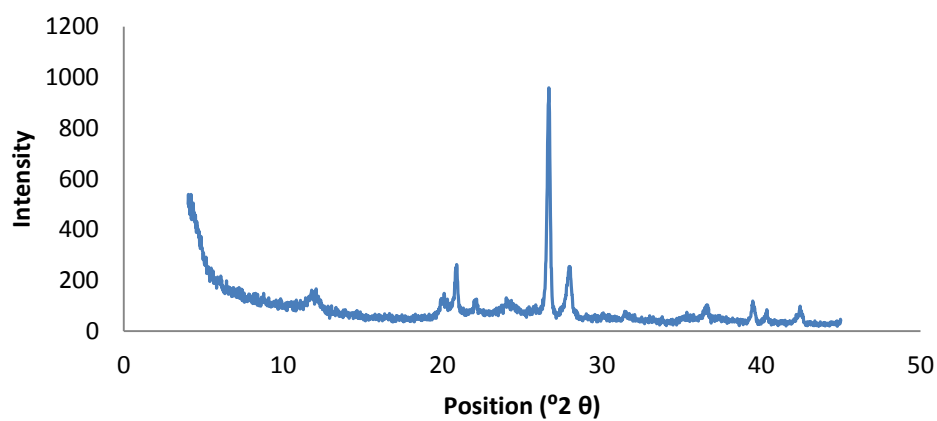
OS1



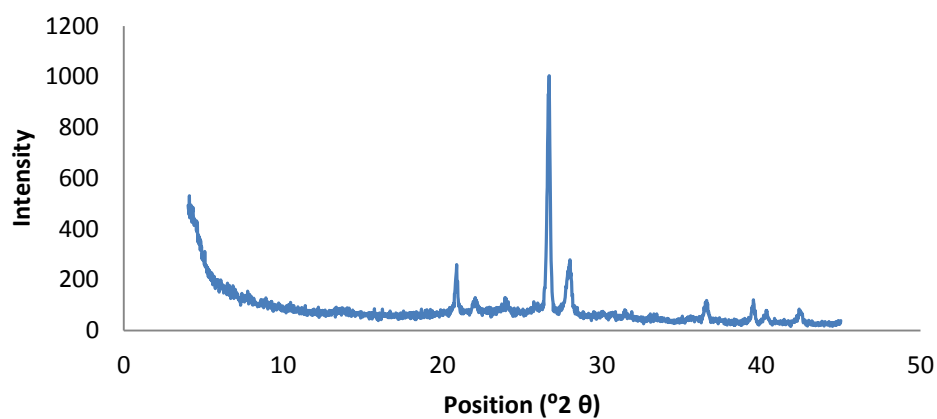
OS1 with formamide added



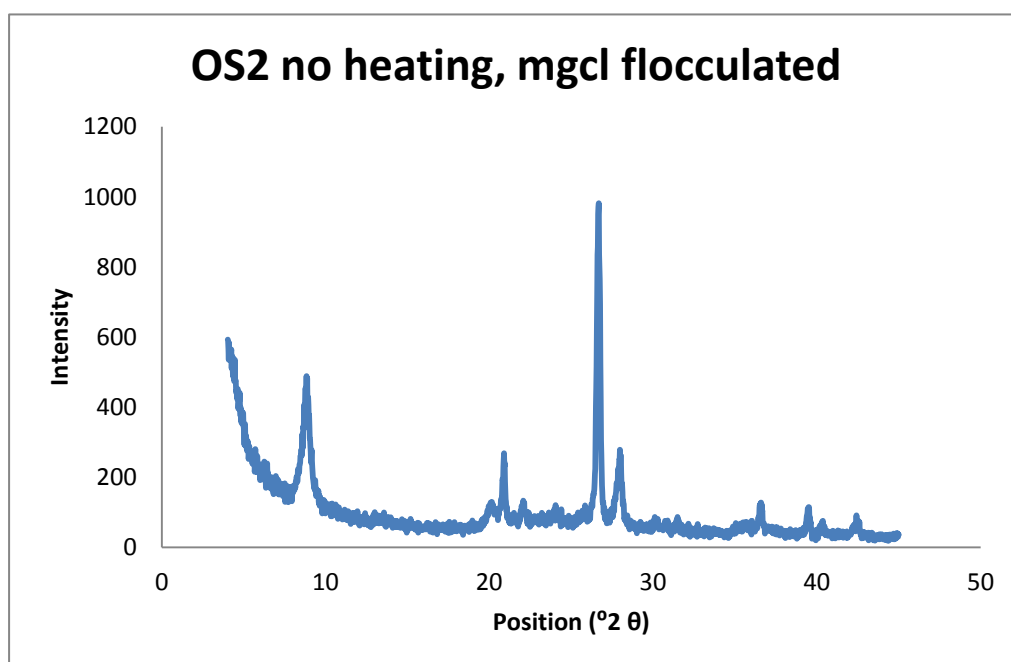
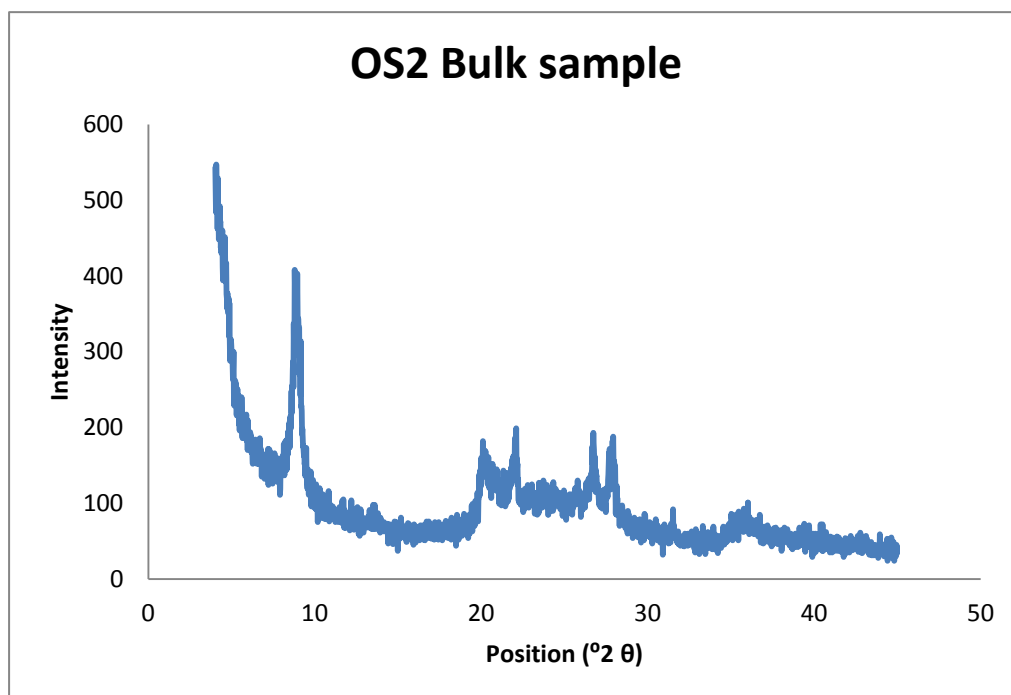
OS1 heating 110 $^{\circ}\text{C}$



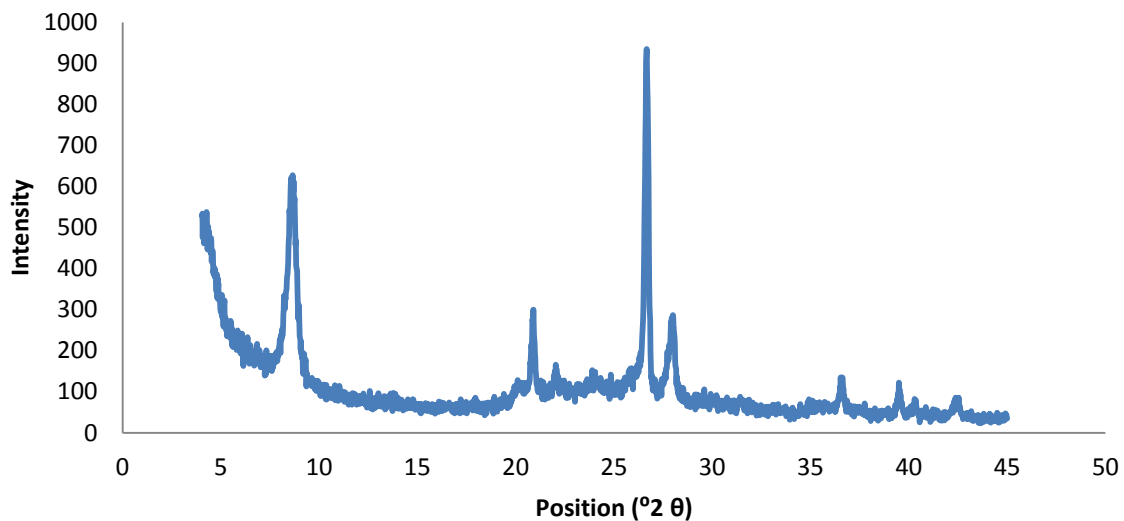
OS1 heating to 550 $^{\circ}\text{C}$



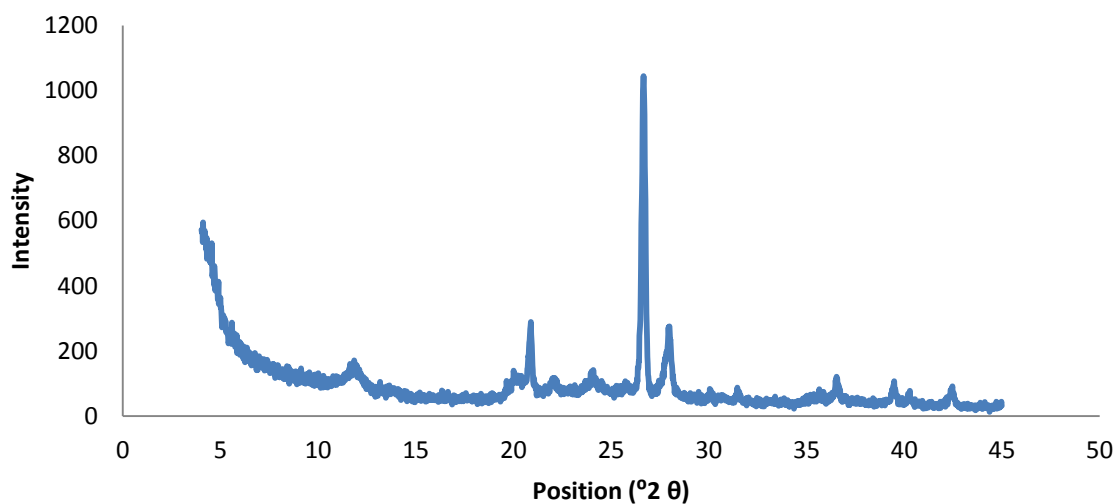
OS2



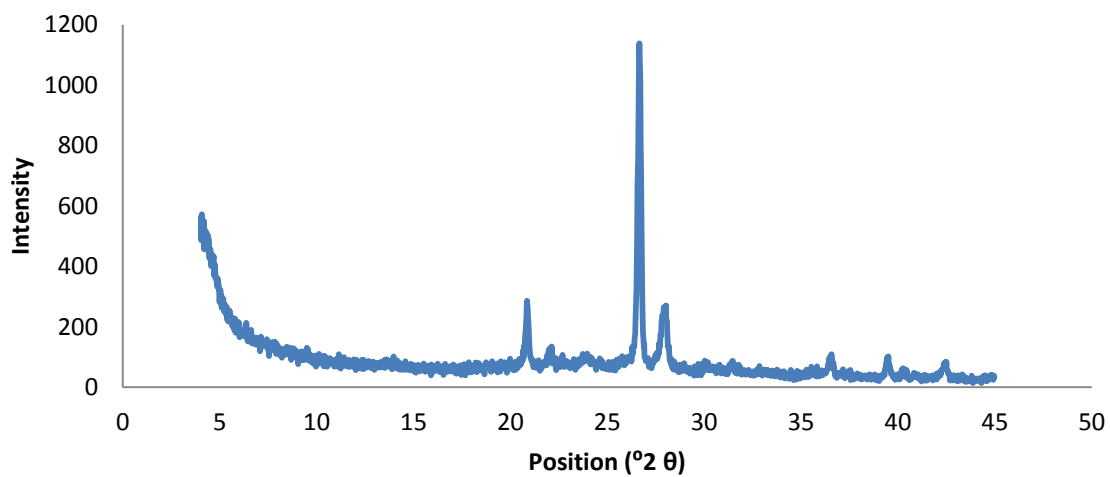
OS2 with formamide added



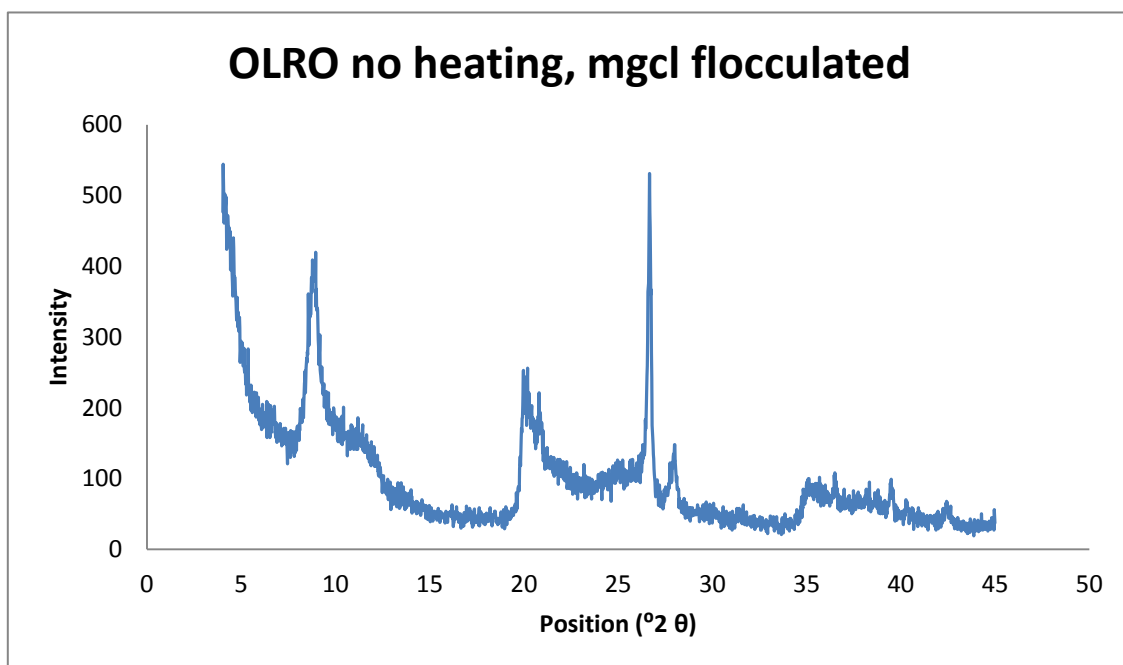
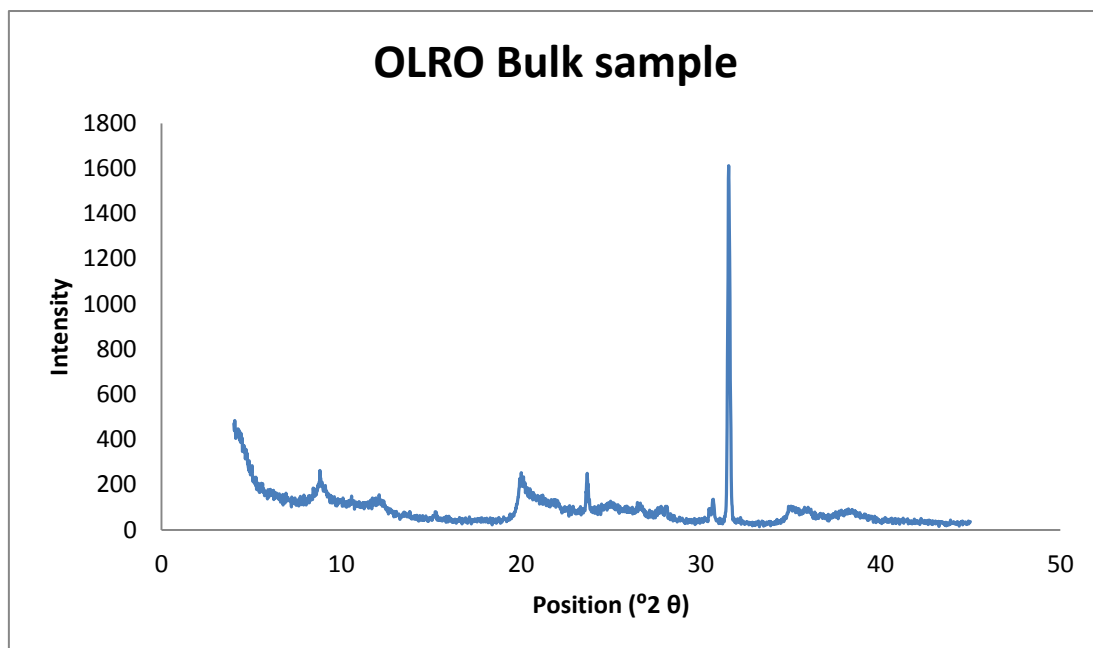
OS2 heated to 110 $^{\circ}\text{C}$

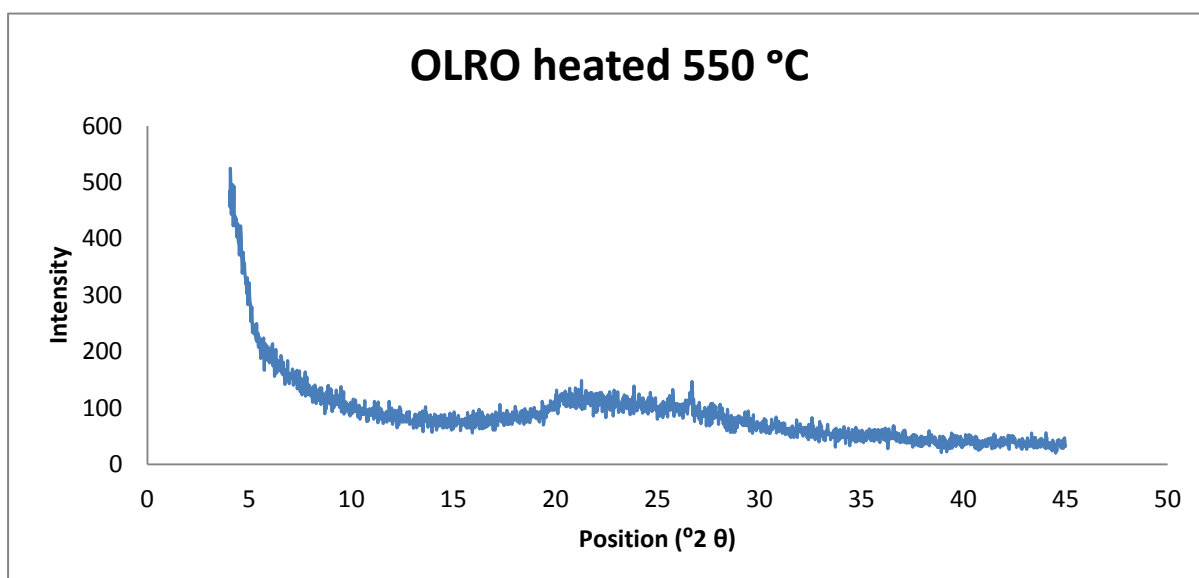
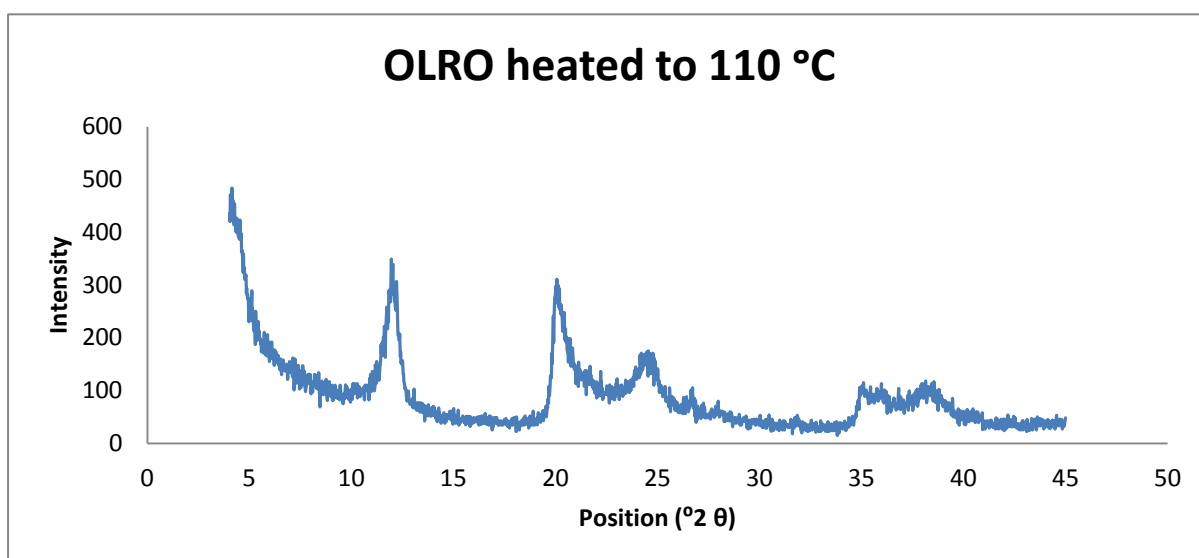
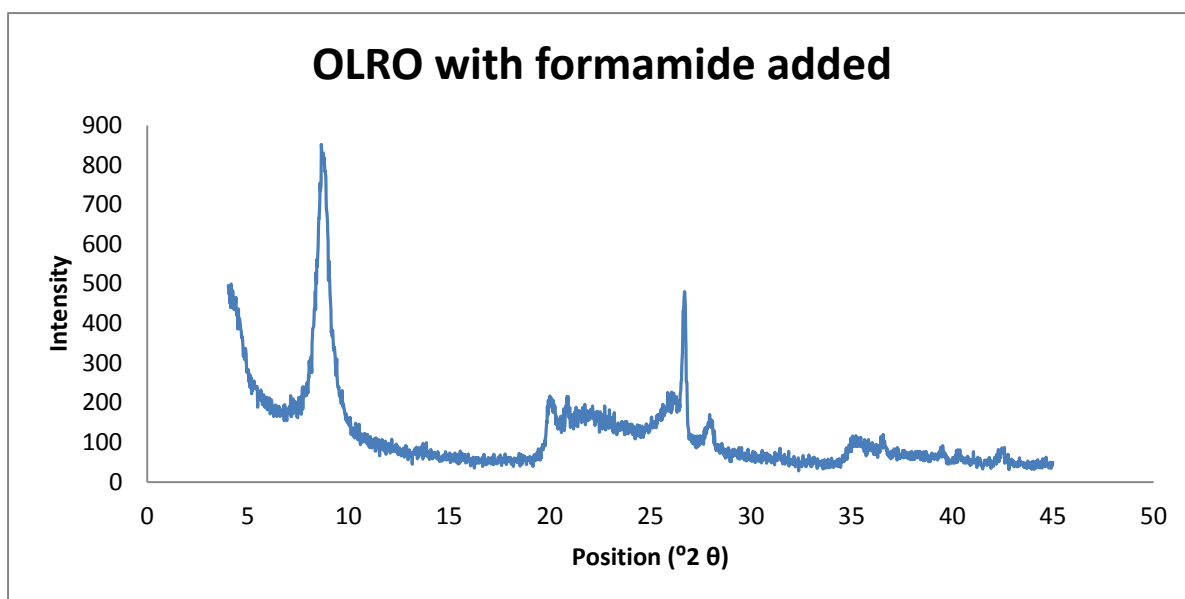


OS2 heated 550 $^{\circ}\text{C}$

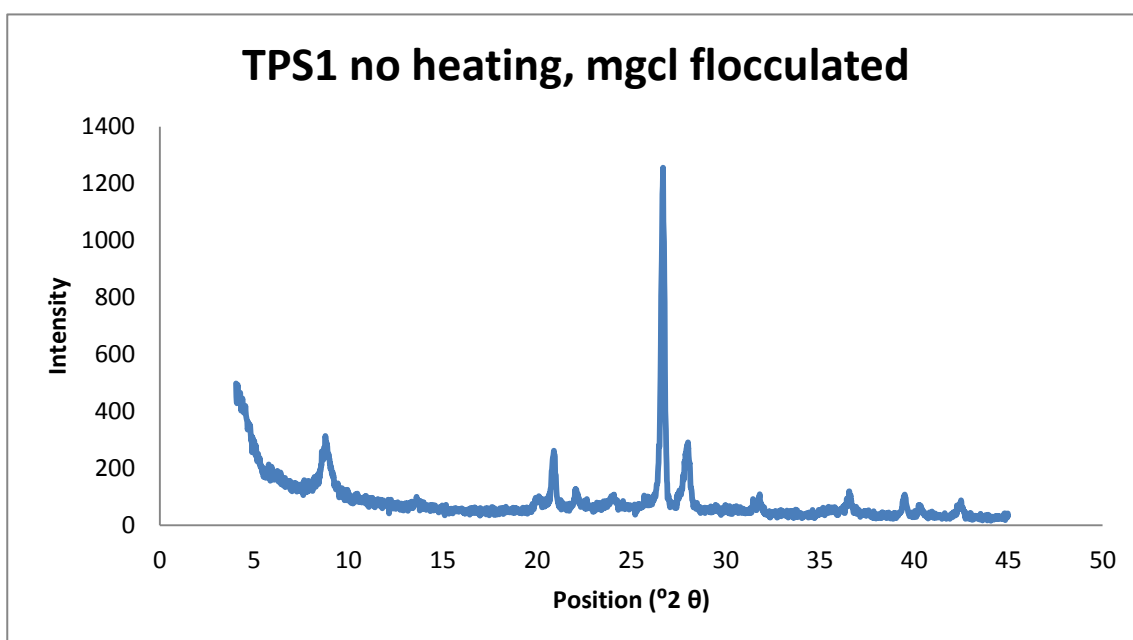
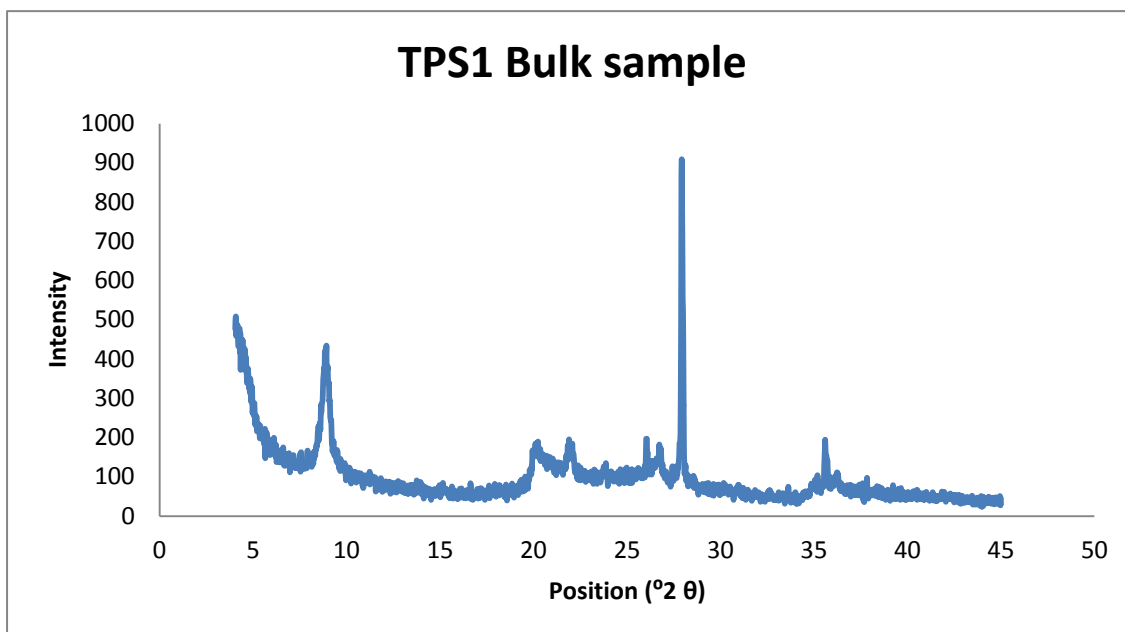


OLRO

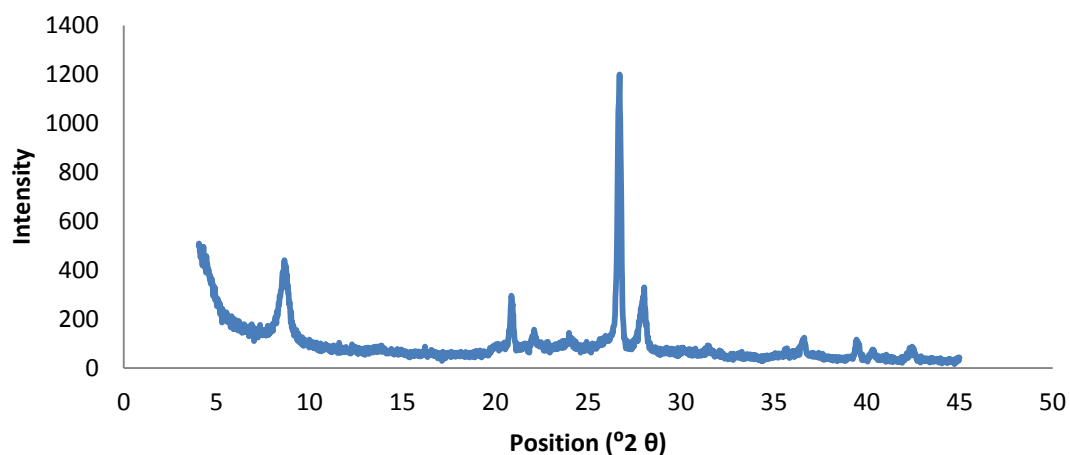




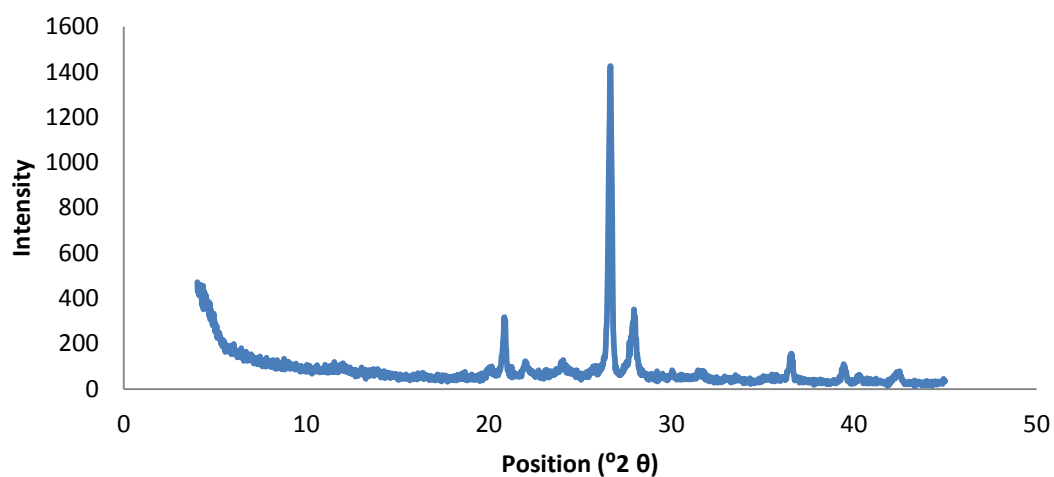
TPS1



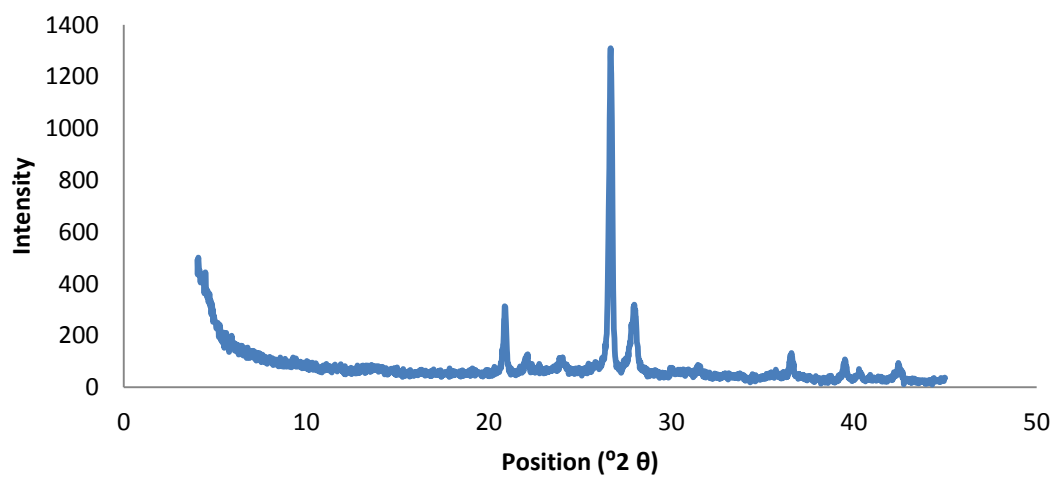
TPS1 with formamide added



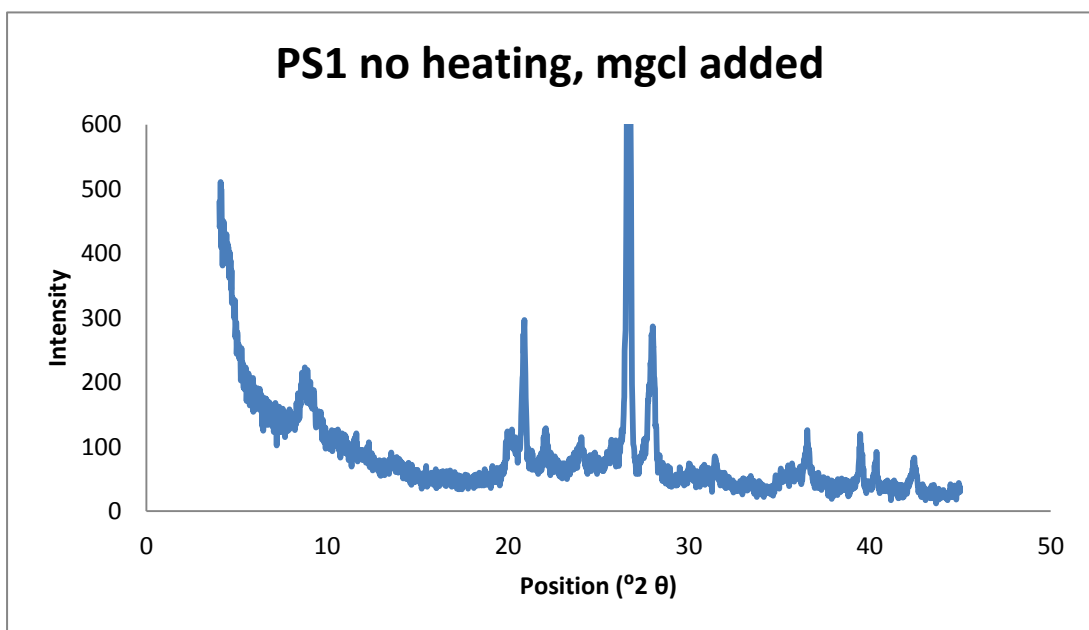
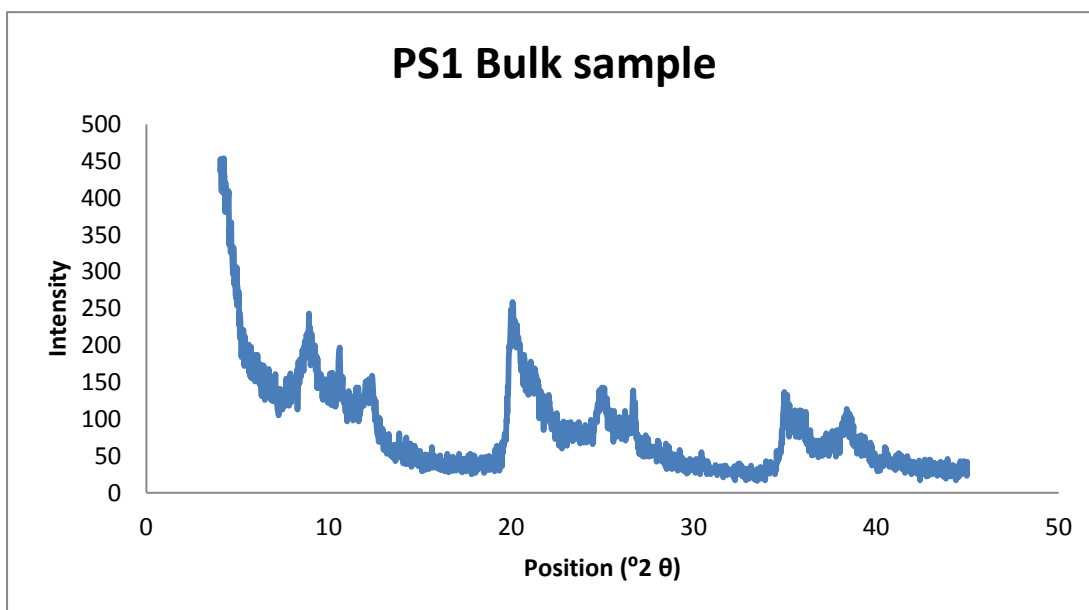
TPS1 heated to 110 $^{\circ}\text{C}$

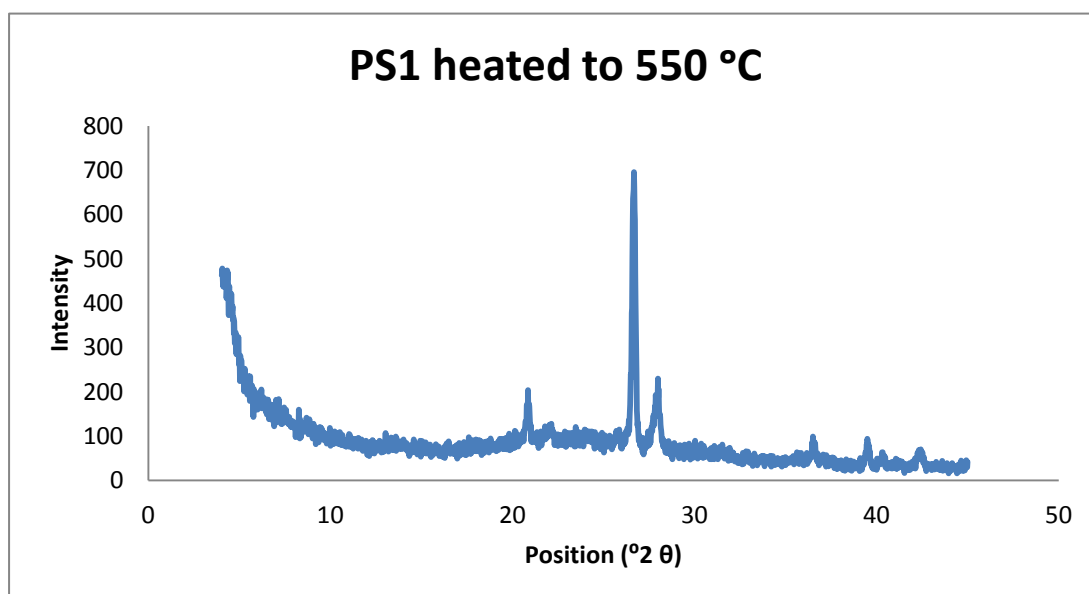
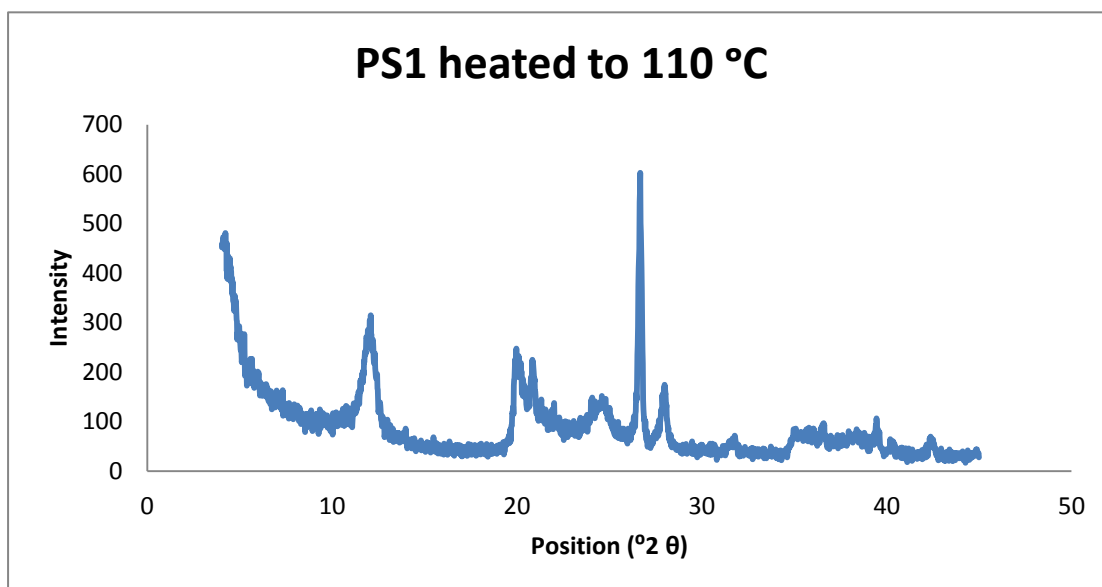
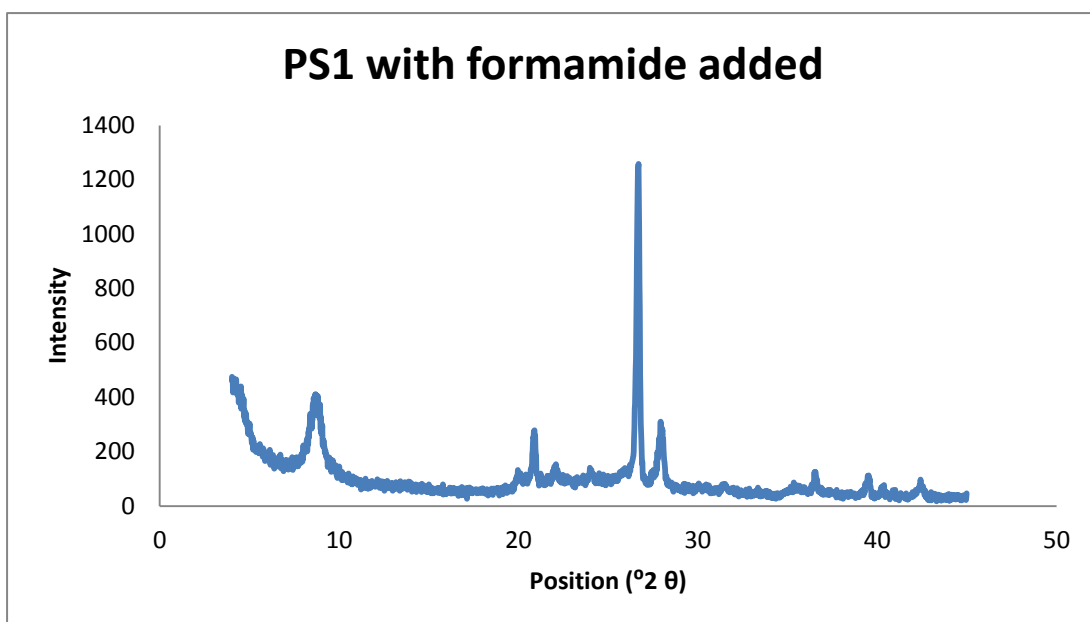


TPS1 heated to 550 $^{\circ}\text{C}$

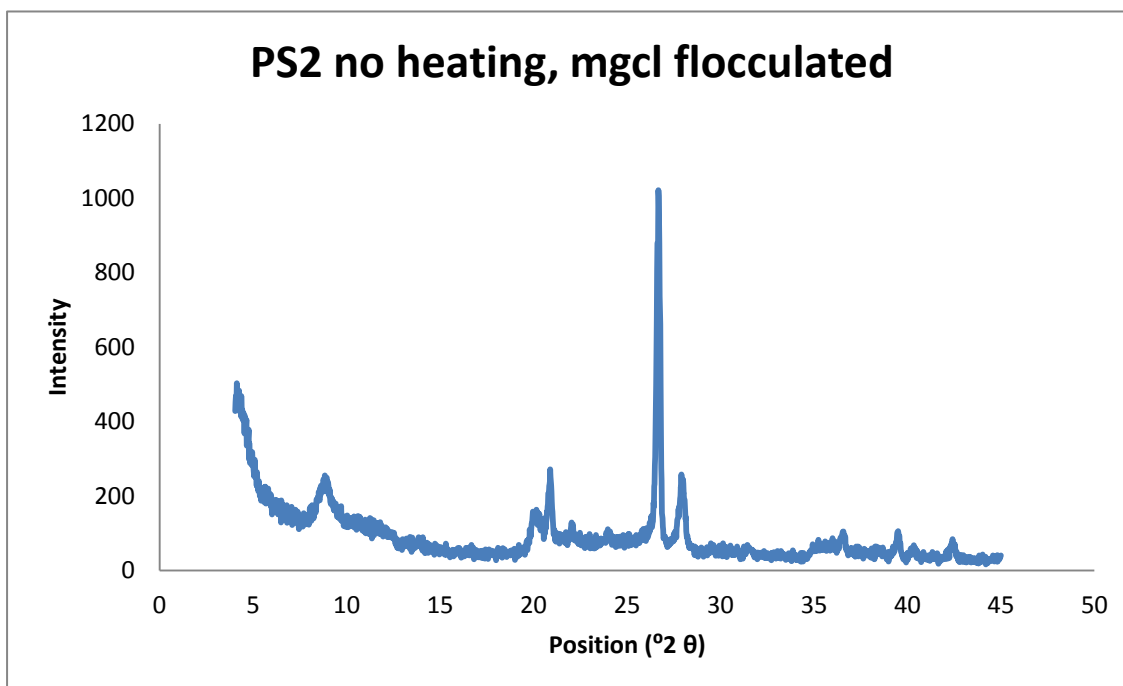
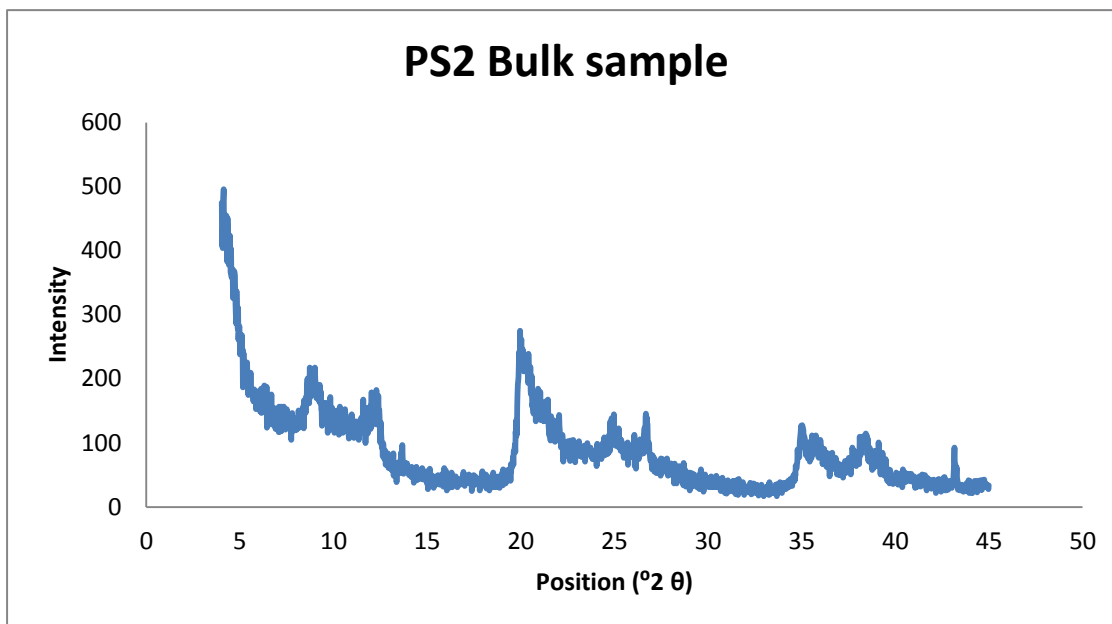


PS1

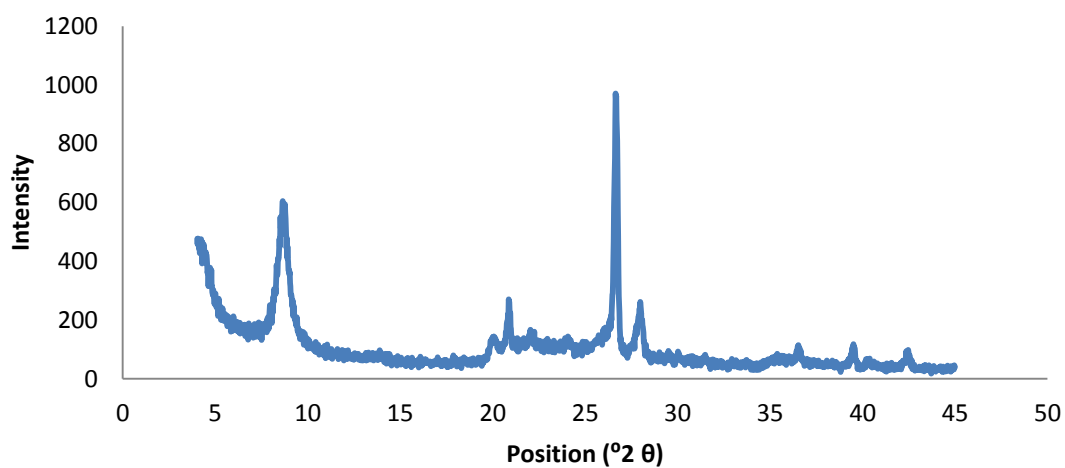




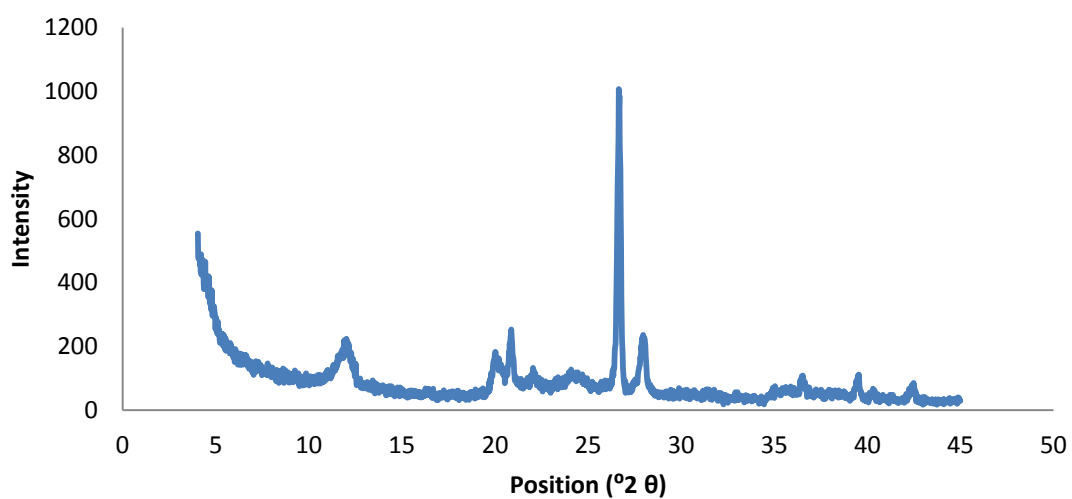
PS2



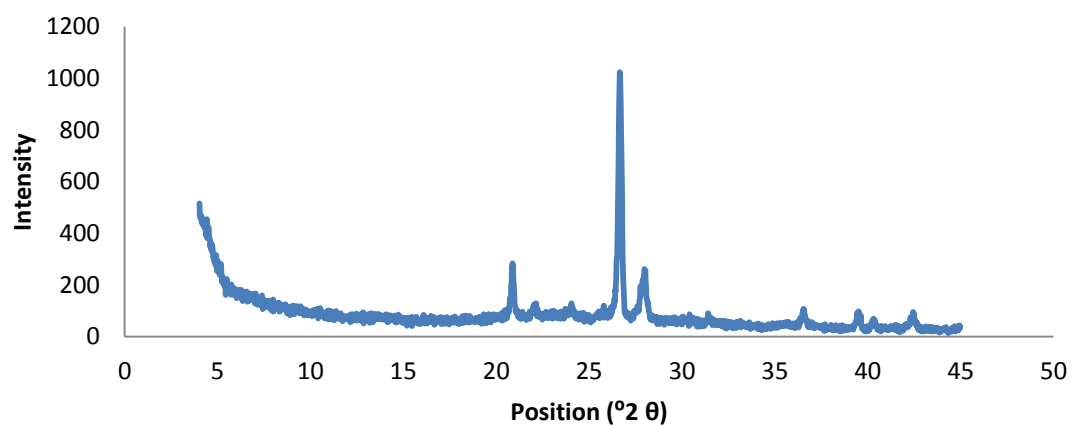
PS2 formamide added



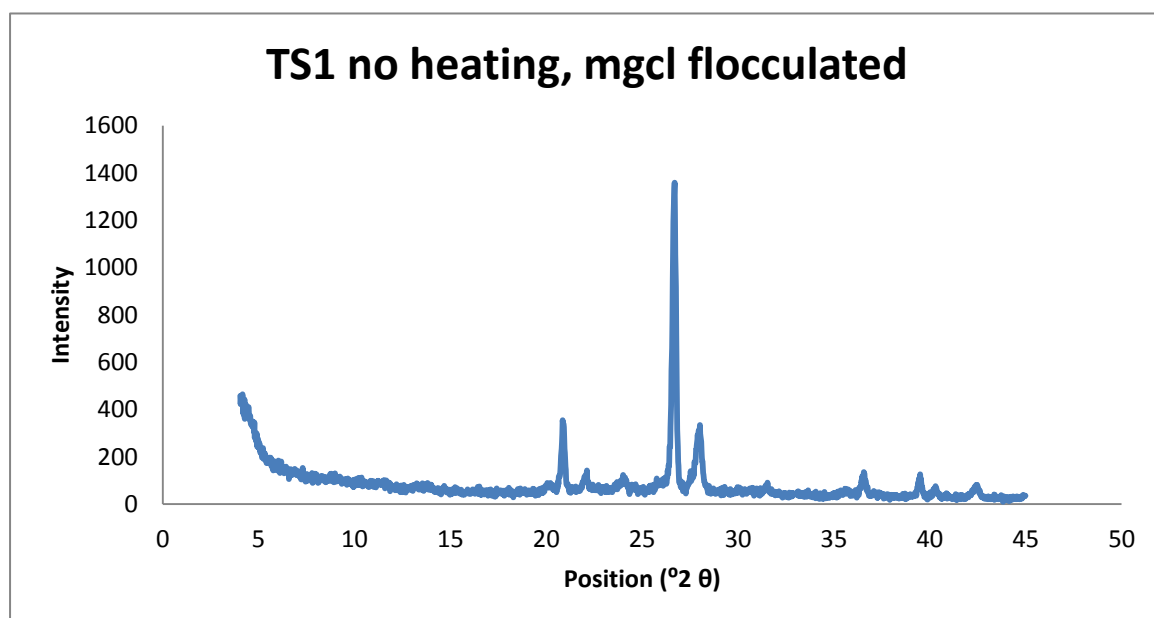
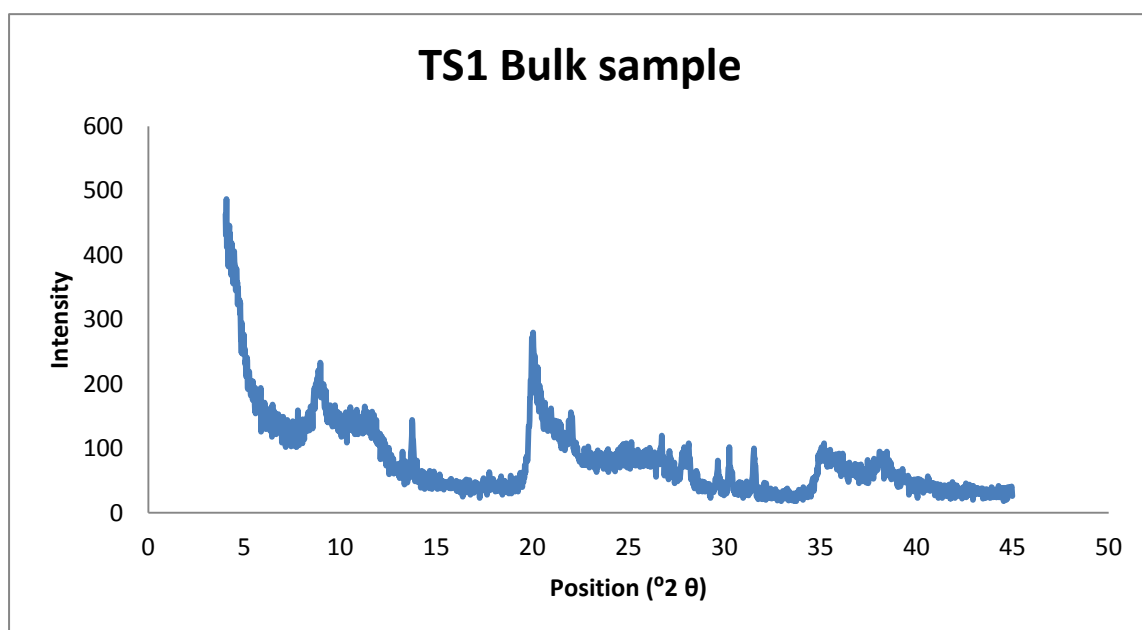
PS2 heated to 110 °C



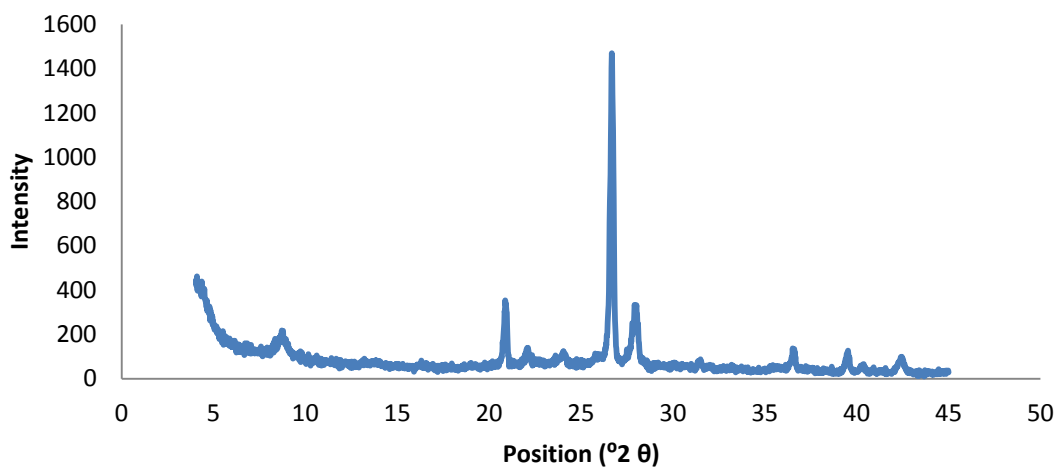
PS2 Heated to 550 °C



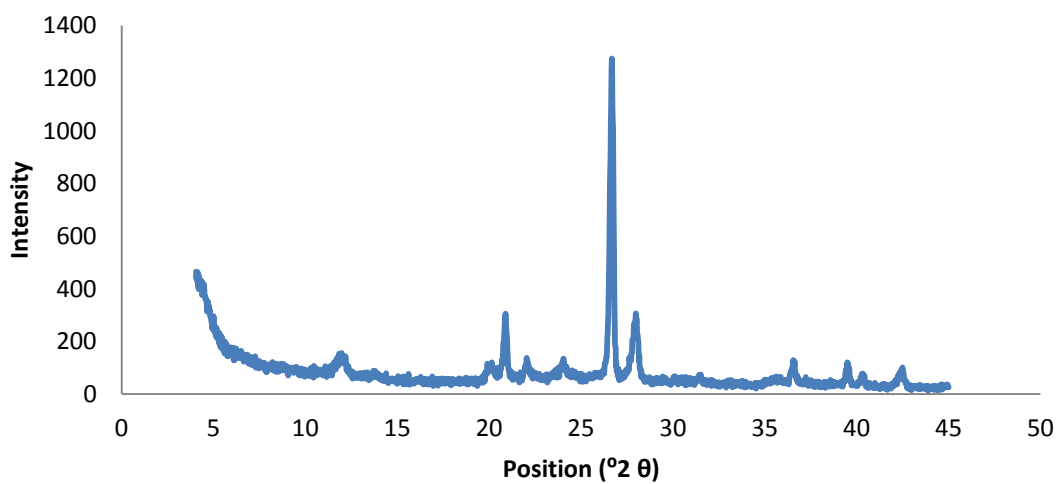
TS1



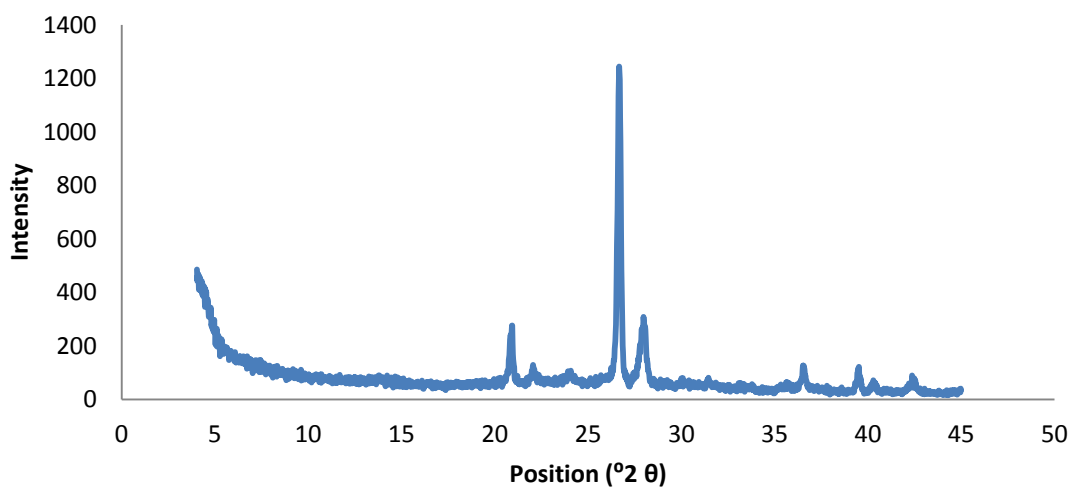
TS1 formamide added



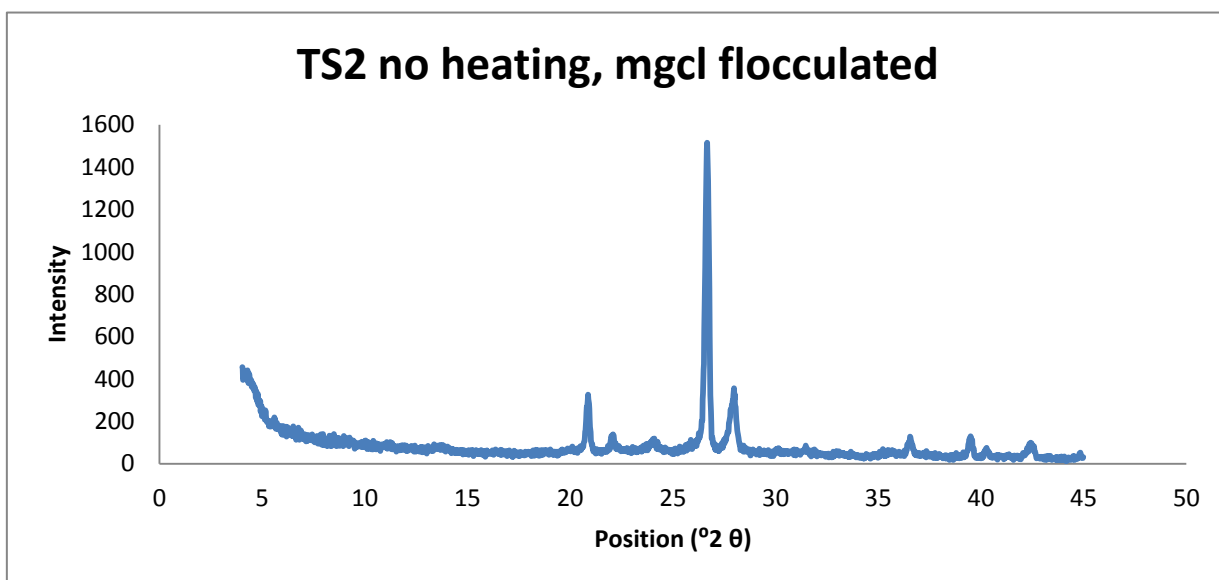
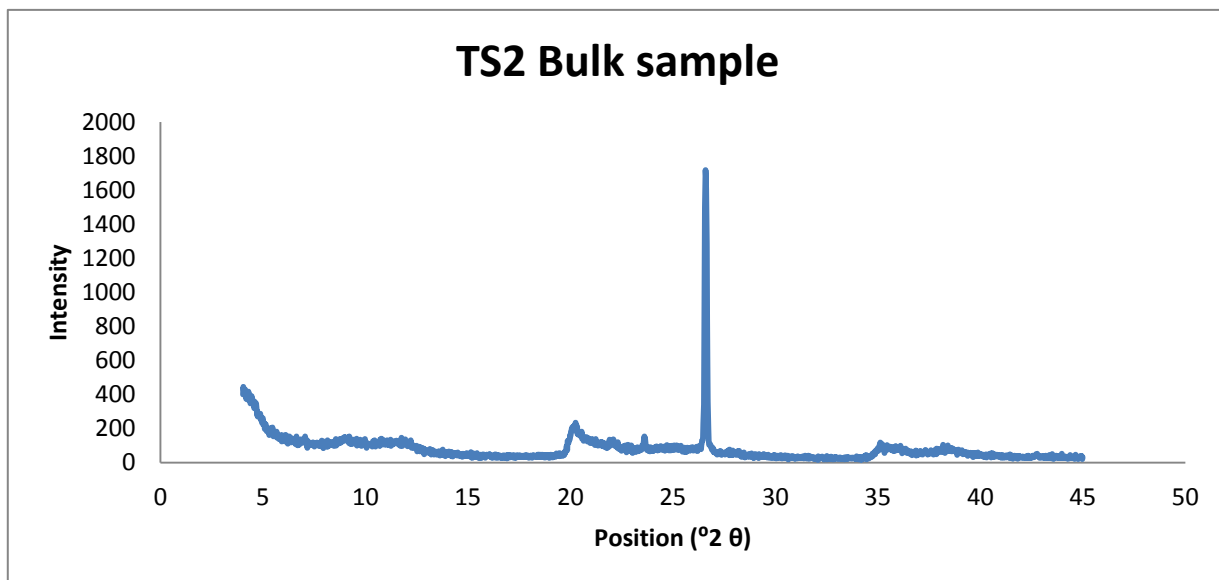
TS1 heated to 110 $^{\circ}\text{C}$



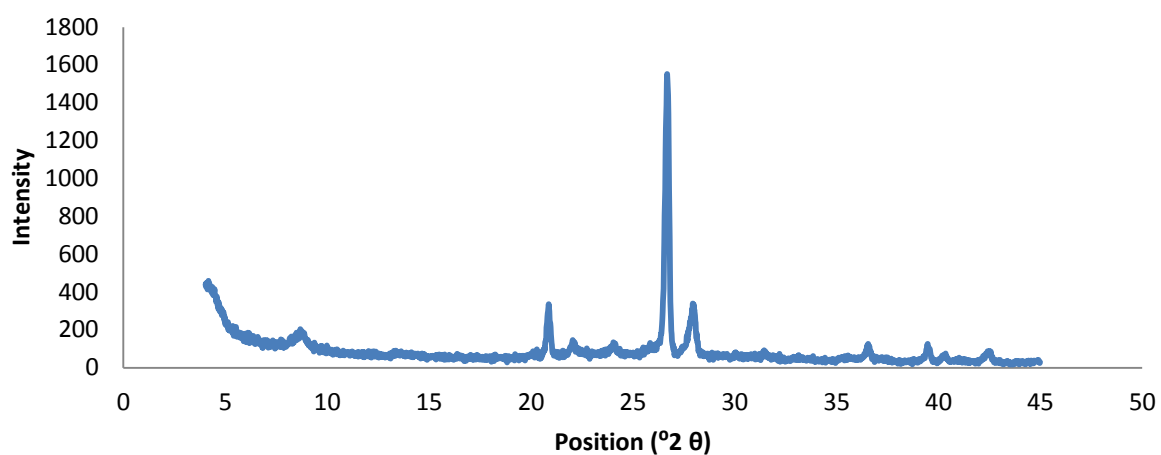
TS1 heated to 550 $^{\circ}\text{C}$



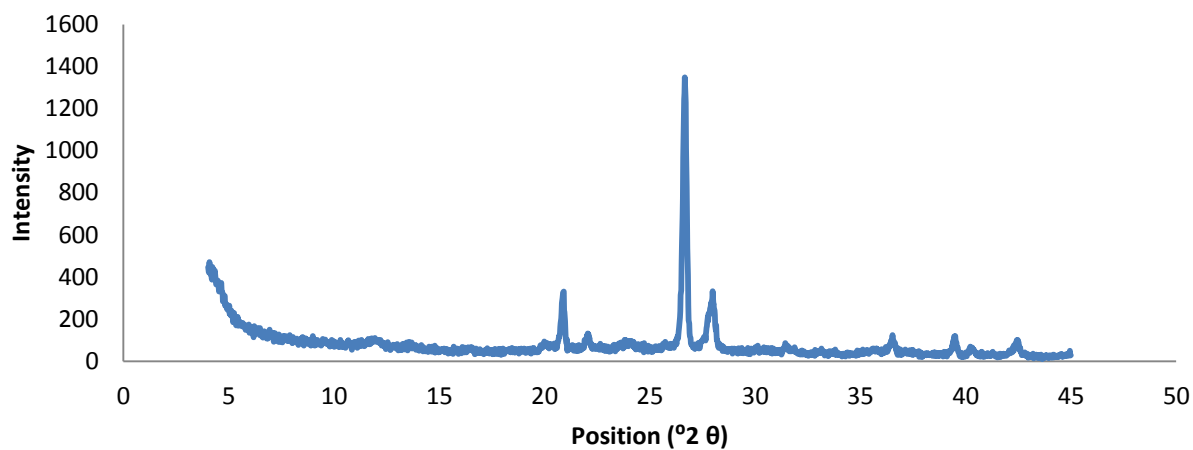
TS2



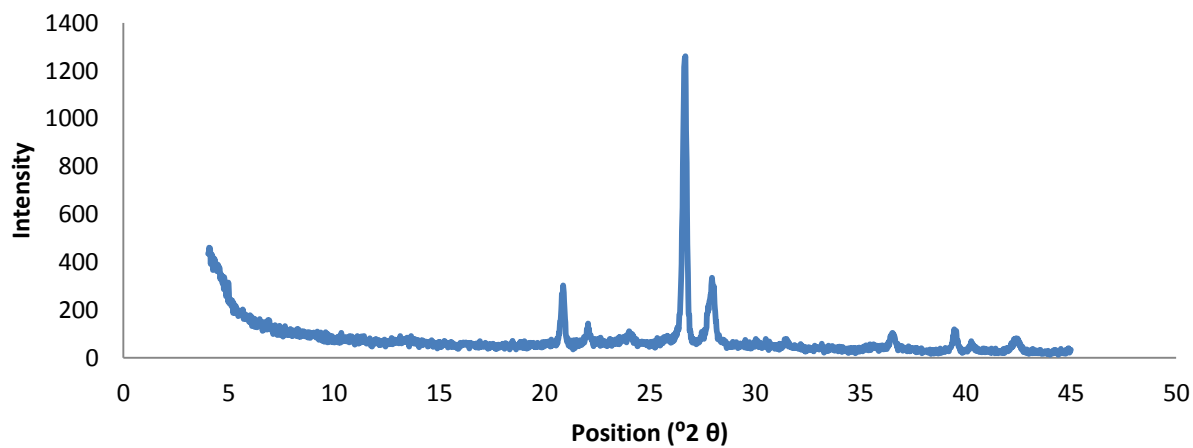
TS2 with formamide added



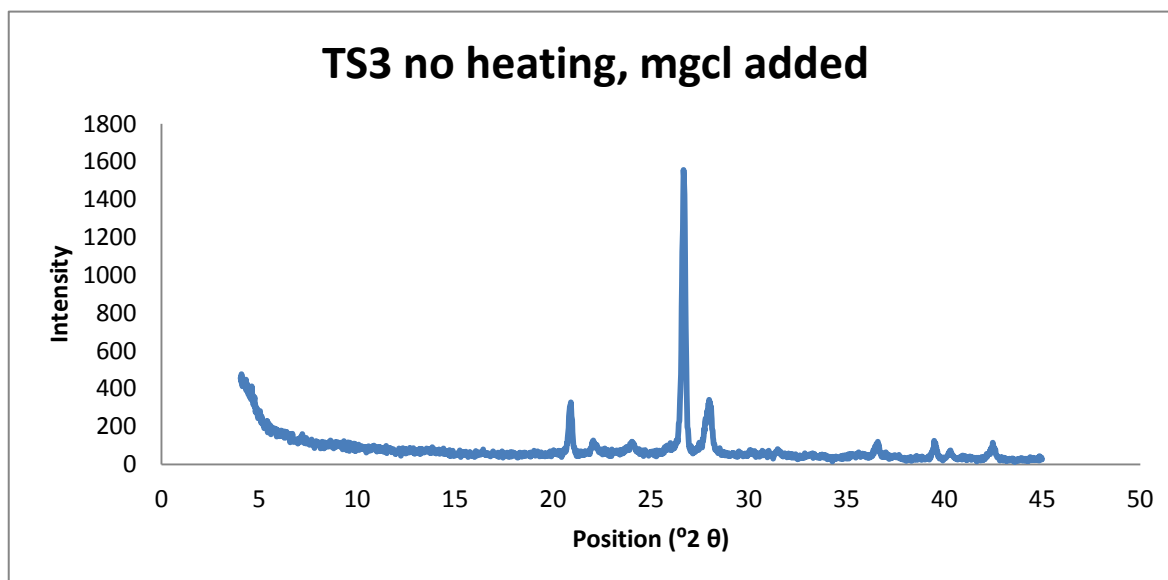
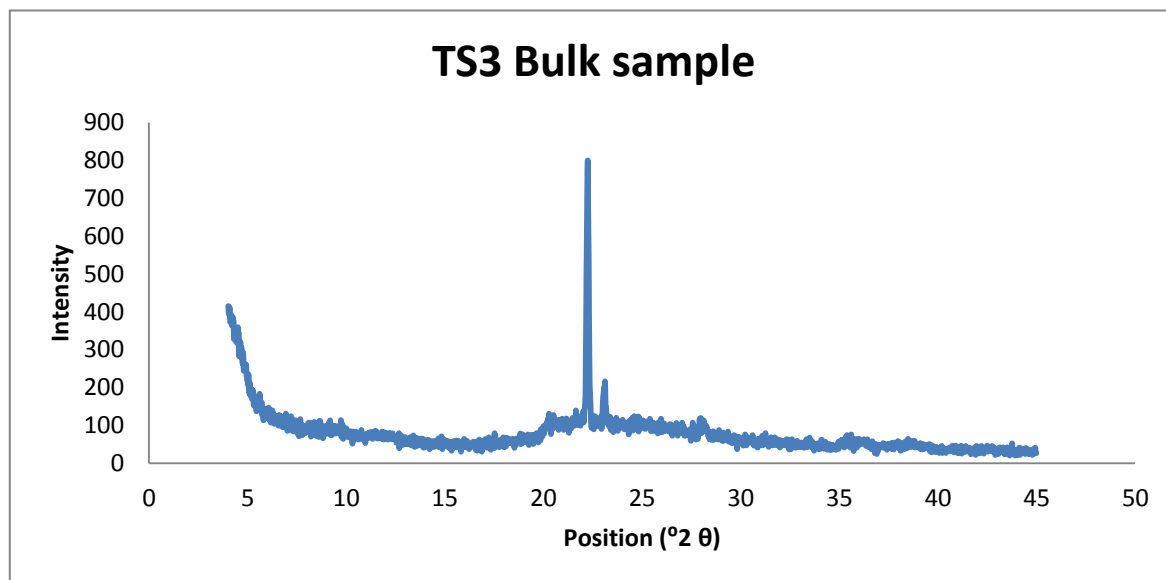
TS2 heated to 110 $^{\circ}\text{C}$



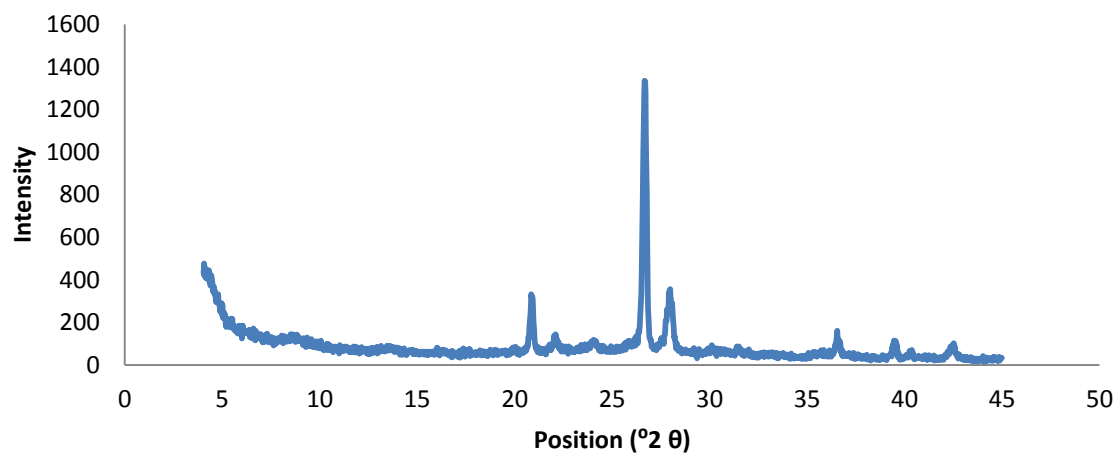
TS2 heated to 550 $^{\circ}\text{C}$



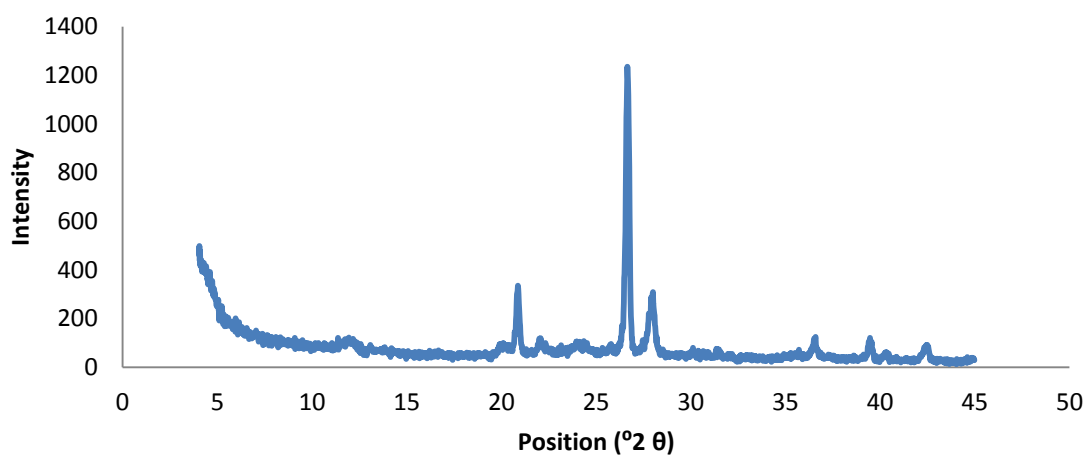
TS3



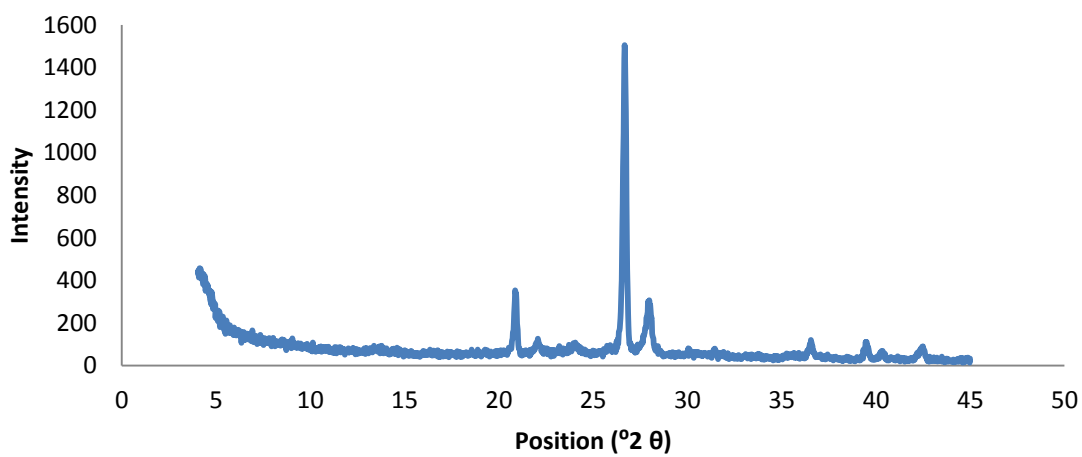
TS3 with formamide added



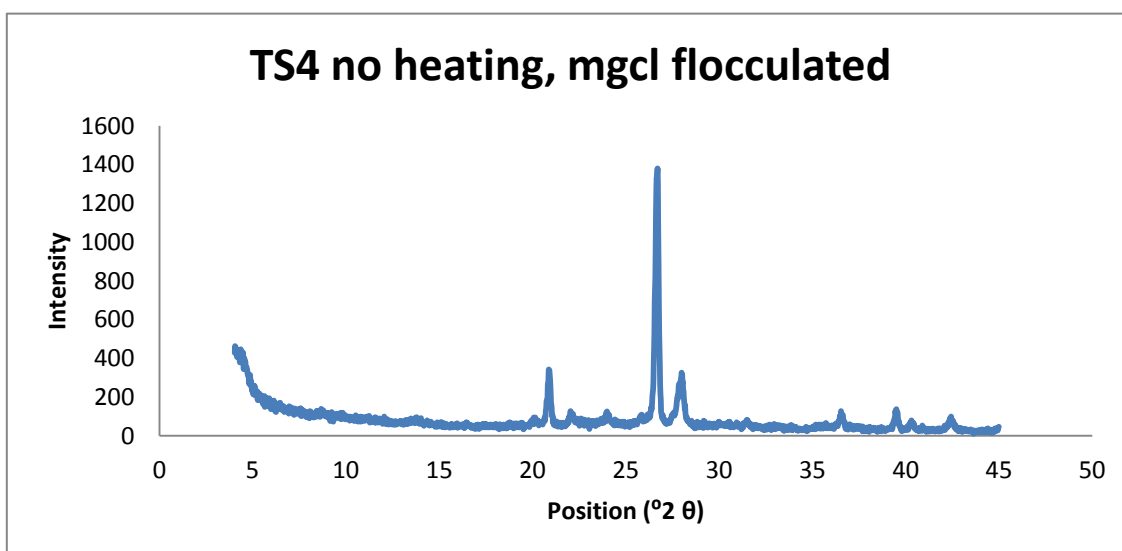
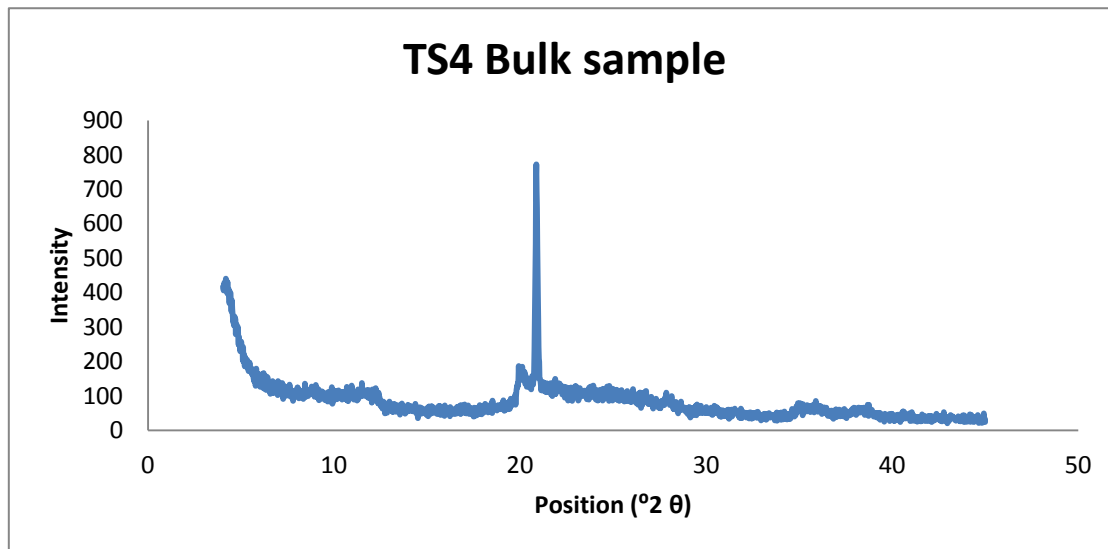
TS3 heated to 110 $^{\circ}\text{C}$

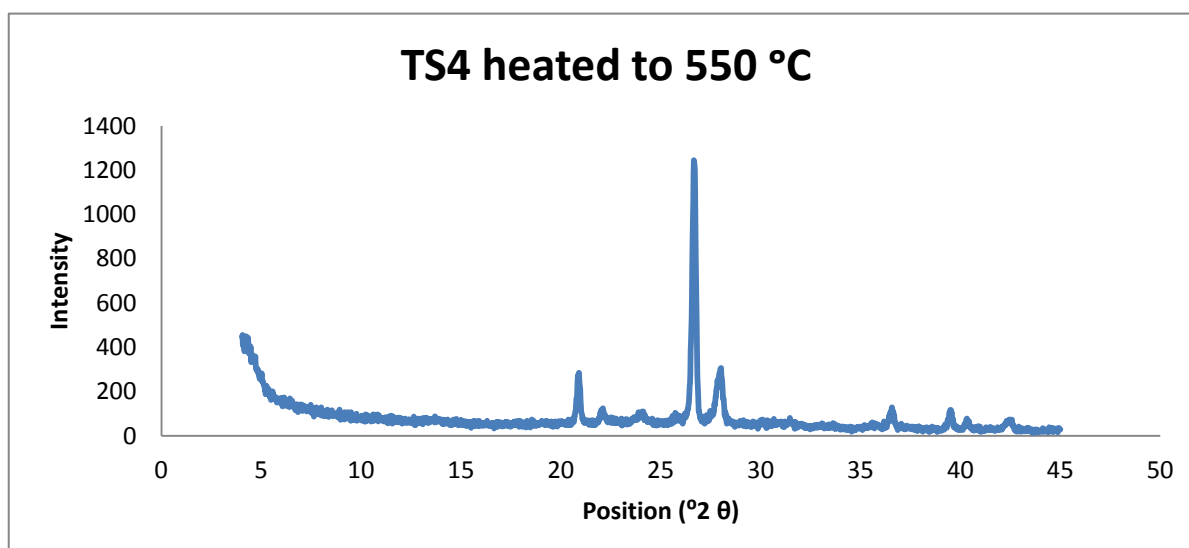
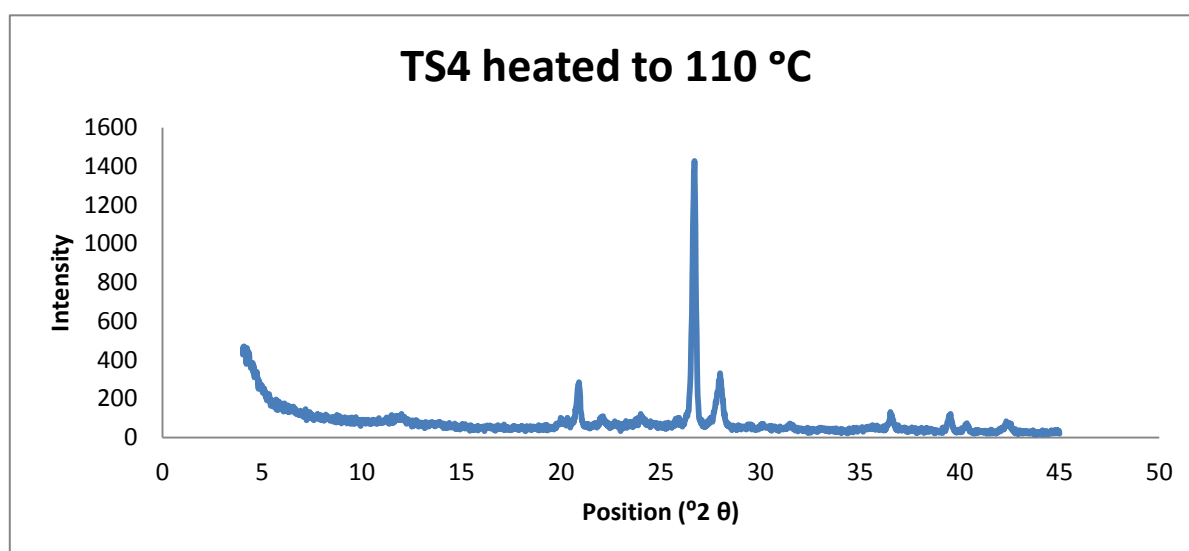
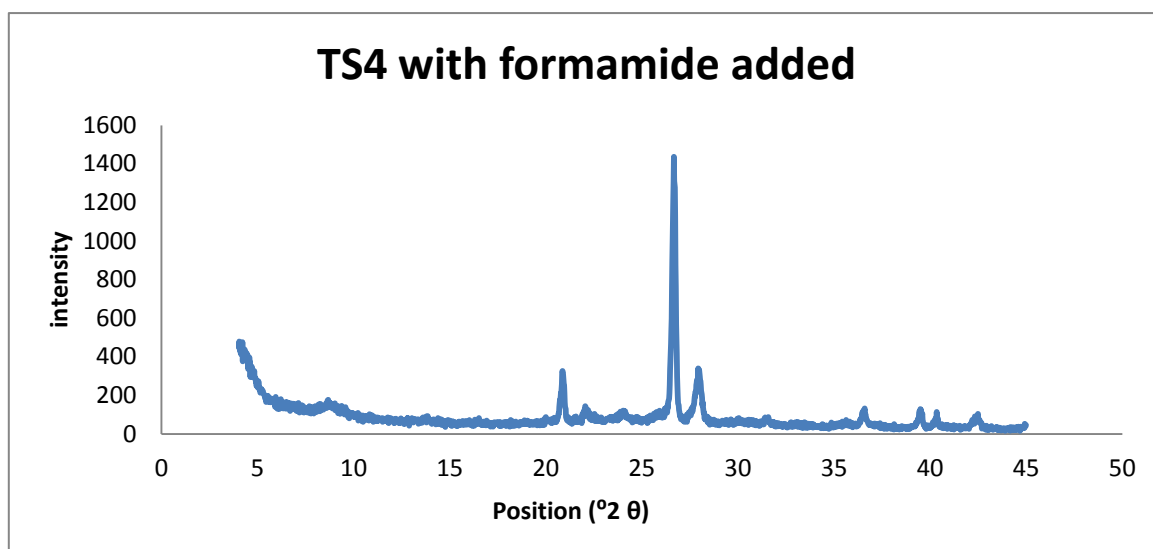


TS3 heated to 550 $^{\circ}\text{C}$



TS4





RS1

